

SELF-CLIMBING FORMWORK

With the aid of an inbuilt hydraulic device, SCF climbs step-by-step without the need for a crane, matching the pace of construction.



At Work For You

HUNNEBECK 

BY BRAND SAFWAY

SCF self-climbing formwork can take up and discharge all forces up to a maximum vertical load of 150 kN per bracket. With a maximum influence width of 8.50 m per bracket, formed surfaces up to 5.50 m high or 17 m wide are now possible.

► Product benefits

Economical

Only one embedded climbing anchor per bracket per lift – less consumables and labour than traditional SCF systems

Very high vertical load capacity up to 150 kN per bracket, wider platforms and higher loading weight

Additional work decks above the formwork for continuous rebar operation and easier handling of double length vertical rebar

Versatile

Compatible with all beam and frame formwork

Upwards and higher: forming operations at heights of over 300 m are no challenge for SCF

Safe

Housing at all working levels provides additional protection against falling debris and weather conditions for both workers and materials

Fulfils all safety requirements according to EN, British and American Standard

Quick

Large hydraulic stroke for faster climbing and less control effort during climbing



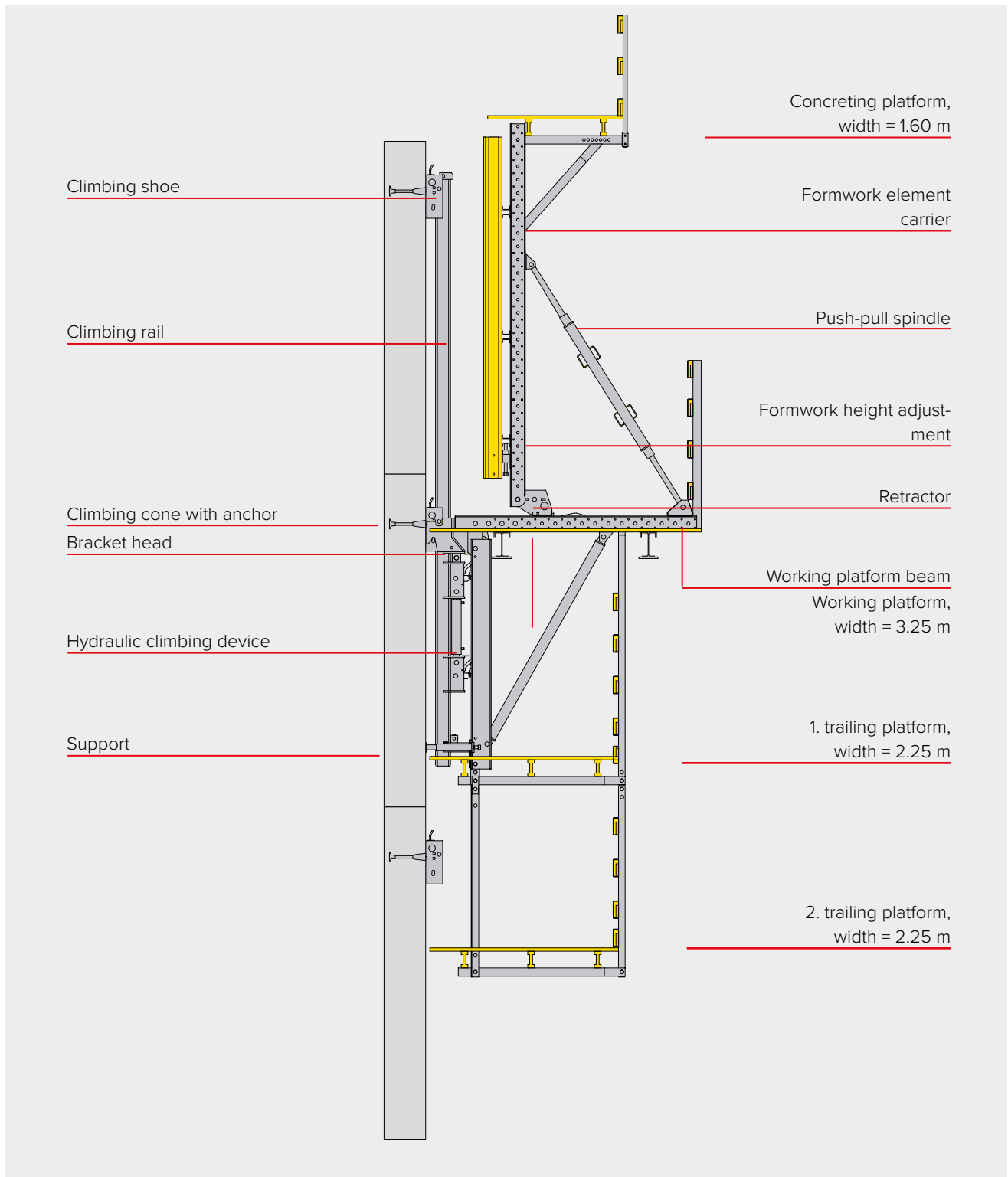
► Upwards and higher: forming operations at heights of over 300 m are no challenge for SCF

► Technical data

Product description	Self-climbing formwork system
Vertical load capacity	150 kN per bracket (for climbing and static)
Platform widths	Working platform 3.20 m Trailing platform 2.30 m Pouring platform 1.50 m
Climbing direction	Inclined climb tracks in all directions technically possible (forward, backwards, sideways and curved)
Hydraulic	Simultaneous operation of up to 8 brackets per hydraulic pump, completely secured and movable hydraulic pump
Wall offset	Passing of wall offsets up to 50 mm without extra measures, up to 150 mm with extra measures
Bracket spacing	With 4 m formwork height, up to 4.75 m (depending on wind load)
Wind speed	Tested up to 208 km/h



◀ The ratio of bracket number to shuttered surface can be adapted precisely to the building's geometry. The result is shorter shuttering times, less work, more efficiency.



► Overview of the main system components of the Self-Climbing Formwork (SCF)

SCF integrates with

- MANTO®
- PLATINUM 100
- H 20 wall formwork