

Facade formwork

For the easy construction of facades that are made up of both prefabricated elements and in-situ concrete columns – without edge tables.



At Work For You

HÜNNEBECK 

BY BRAND SAFWAY

By constructing the building facade ahead of and independently from the slabs, the slabs can be constructed faster and safer with the help of the Hünnebeck facade formwork.

► Product benefits

Economical

The facade formwork enables mixed structures to be formed in economical procedures

Low quantities of equipment kept on site thanks to leading construction cycles

Units are transferable by crane in a quick and safe manner

Strong & durable

Long service life thanks to hot-dip galvanisation of all steel soldiers and parts

Safe

Safe and easy-to-use connectors for quick operations

Quick

No time-consuming forming with edge tables in connection with slab construction

Low number of parts keep operations simple (soldiers, supports, walers, and fasteners)

Easy handling

The small number of simple work steps are quickly learnt

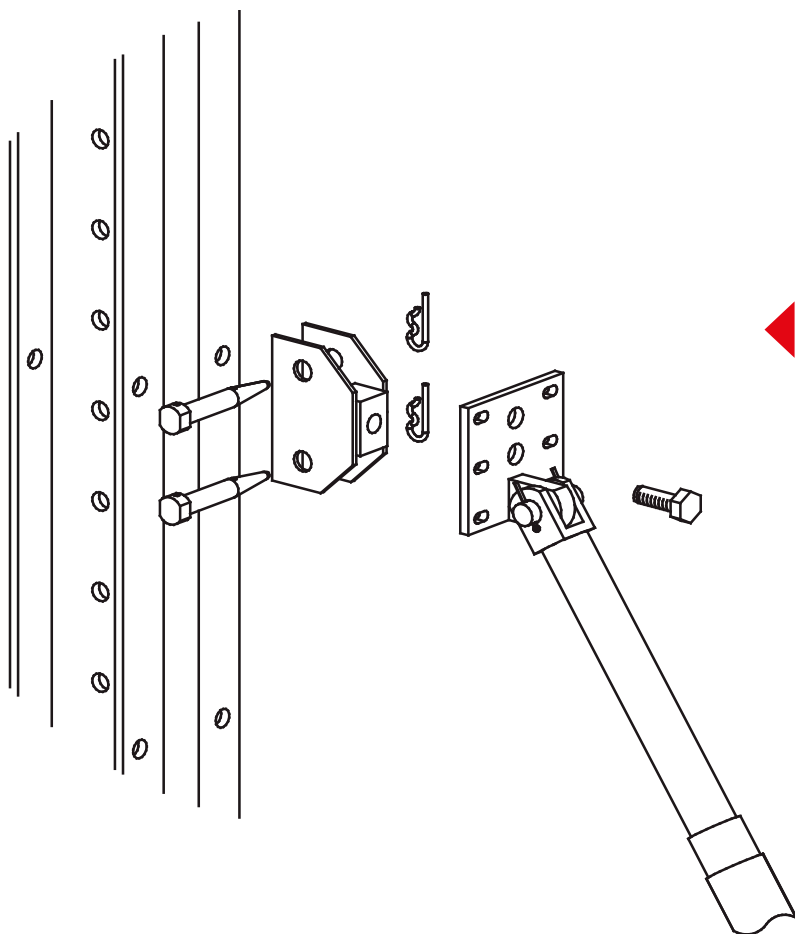
Retractable supports allow easy transfer via crane



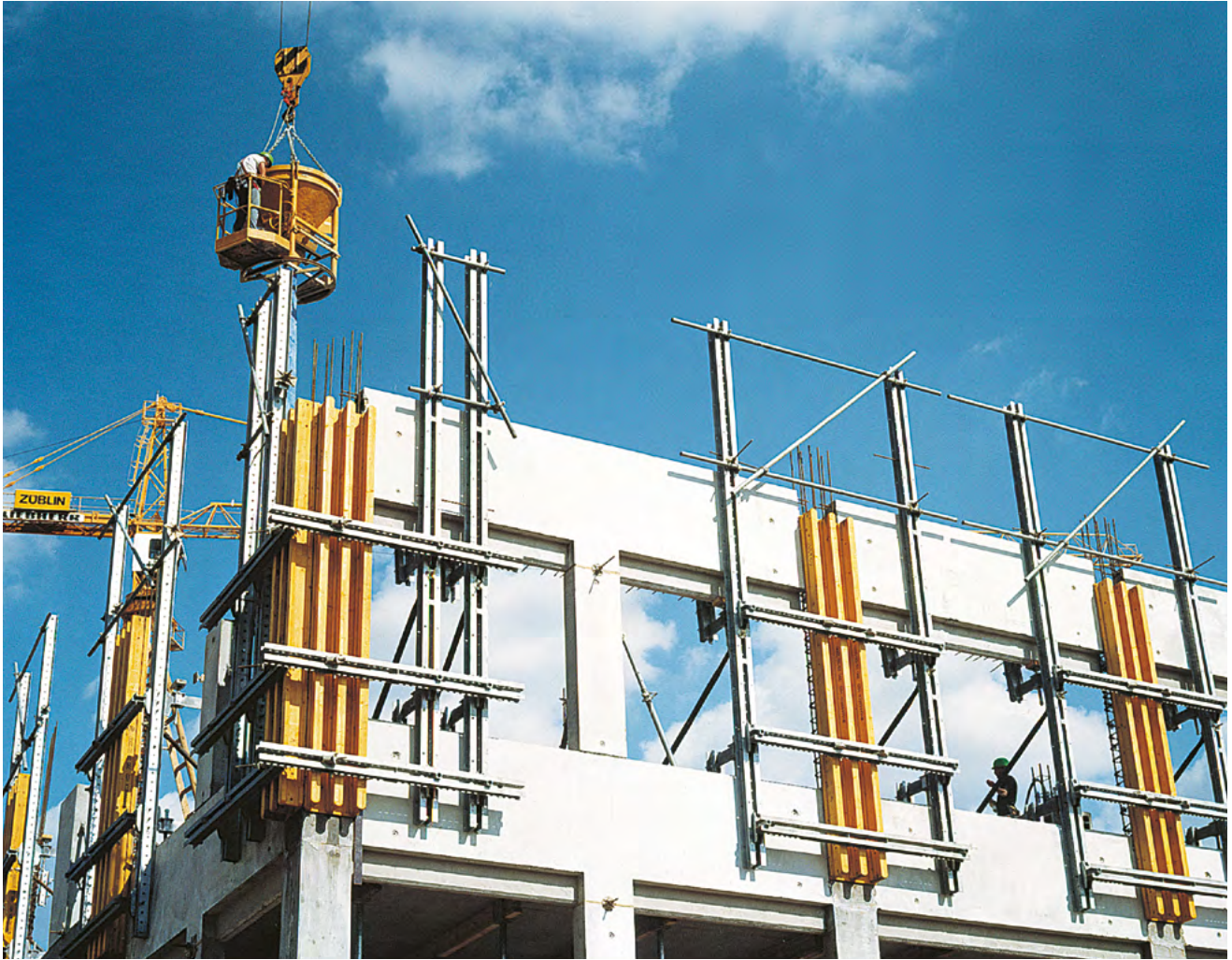
► Low quantities of equipment kept on site thanks to leading construction cycles

► Technical data

Product description	Facade formwork for facade construction
Soldier lengths	50 75 100 125 cm Facade soldier = 600 cm
Steel waler lengths	96 121 146 171 196 221 246 271 296 cm
Steel waler horizontal	Steel waler 246 facade
Support types	Horizontal support Weight = 27.80 kg Facade adapter Weight = 6.40 kg Vertical support Weight = 7.30 kg
Connection elements	Facade soldier to steel waler 246 via facade adapter Vertical support to waler via pins and spring cotters Horizontal support to facade soldier via pins and spring cotters
Permissible concrete pressure	Columns in-situ concrete: 40 50 60 80 kN/m ²
Wall thicknesses	Suitable for prefab elements with 10 – 30 cm wall thickness
Form lining thickness	Plywood 21 mm
Relevant standards	DIN 18202 (line 6, 7)
Erection & dismantling	Erection: 1.0 h/unit * Dismantling: 0.3 h/unit *
Special features	Facade soldiers, walers and bracings form a strong unit



◀ Wall struts and bracing can easily be connected: The connection part has to be bolted to the facade soldier and fixed with the included pins and spring cotters. The wall strut is attached to the connection part using the included bolt.



► The facade formwork enables mixed structures to be formed in economical procedures.



► The small number of simple work steps are quickly learnt

Application & use

- Facades that are made of prefabricated elements and in-situ concrete columns