

RASTO[®]

RASTO is a versatile 60 kN/m² wall formwork, which offers an ideal solution for small and mid-size projects, especially in residential construction.



At Work For You

HÜNNEBECK 

BY BRAND SAFWAY

RASTO is a frame panel formwork that can – up to a panel width of 90 cm – be used by hand without a crane or as large-area units with a crane.

▶ Product benefits

Versatile

Highly versatile wall formwork system with the same connection elements for every project size
RASTO multi-purpose panels for easy forming of columns and corners

Strong & durable

Longer service life due to the robust, galvanised steel frame profile with 12 cm thickness

Easy handling

The easy-to-use outer corner clamp makes an outer corner out of two standard panels

The adjustable aligning clamp permits adjustments up to 15 cm and flush, force-fit connections

Economical

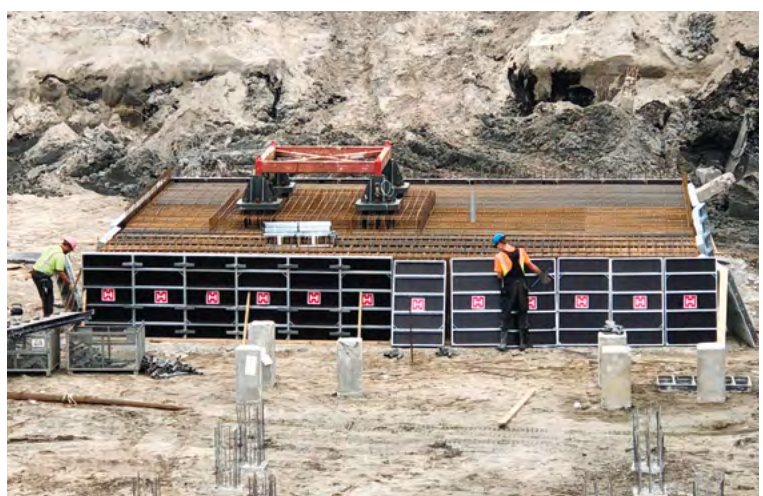
Craneless forming possible due to low weight of basic RASTO panels

RASTO aligning clamps provide a strong, tight and flush panel connection in just one working step

RASTO XXL panel for large-area forming



▶ Highly versatile wall formwork system with the same connection elements for every project size



▶ Craneless forming possible due to low weight of basic RASTO panels

► Technical data

Product description	Versatile panel formwork system
Panel widths	30 45 50 60 75 90 240 cm
Panel heights	120 150 270 300 cm
Multi-purpose panels	70 x 150 70 x 270 70 x 300 cm
Profile thickness	12 cm steel frame profile
Form lining	Plywood (min. 280 g/m ² coating) ECOPLY full plastic composite sheet
Lining thickness (coating)	Plywood = 14 mm ECOPLY full plastic composite sheet = 15 mm
Average weight	40 to 65 kg/m ² (including connection parts)
Max. concrete pressure	60 kN/m ² (line 6)
Corrosion protection	Fully galvanised steel frame and connection elements
Relevant standards	Complies with DIN 18216 EN 1993
Standard connection	RASTO aligning clamp (aligned and flush connection)
Special connection	RASTO adjustable clamp Outer corner clamp
Inner corners	30/30 cm (with 2° play for easing)
Hinged corners	From 60° to max. 150° angle
Outer corners	Basic panel with outer corner clamps
Forming/stripping times	t = 0.4 – 0.6 h/m ² *
Special features	<ul style="list-style-type: none"> • XXL panel 240 x 270 cm • RASTO shaft corner adapter Panel clamp • High quality form lining on all panels • Extensive accessory parts program



◀ With the RASTO aligning clamp, the joints of the RASTO panels are connected light, tension proof and flush without offset in a single working step.

* Time calculation (average) by Hünnebeck



▶ RASTO: the ideal formwork for smaller and medium-size projects, particularly in the housing sector.



▶ Longer service life due to the robust, galvanised steel frame profile with 12 cm thickness



▶ RASTO as foundation formwork

Application & use

- ▶ Ideal for smaller and medium-size projects
- ▶ Craneless operation of smaller panels possible

RASTO[®] integrates with

- ▶ TOPMAX[®]
- ▶ Aligning struts
- ▶ Support frames