

Wall formwork

Support Frames

Hünnebeck support frames for single-faced walls up to a height of 8.60 m with ease and precision.

- › Technical data
- › Product advantages – work safely & productively
- › Engineering services

BrandSafway
direct.com



Shop Smart Online.
Worldwide. 24/7.



more safety
more productivity

Support Frames

Technical Data

The vertical double-U profiles make the Hünnebeck support frames compatible with virtually any formwork system.



Product description	Support frames for single-faced formwork
Support frame type	Support frame 325 Weight = 171.00 kg
Tying bar	Tying bar 12/60 Weight = 18.20 kg
Additional components	Distance keepers and anchoring parts
Max. pouring height	3.25 m
Support frame type	Support frame 500 Weight = 305.00 kg
Tying bar	SF-tying bar 24/75 Weight = 60.00 kg
Additional components	SF-lower part 200 and base frame 200/2
Max. pouring height	8.60 m
Max. concrete pressure	Up to 60 kN/m ²
Special features	Double vertical U-profiles permit connection to any form system

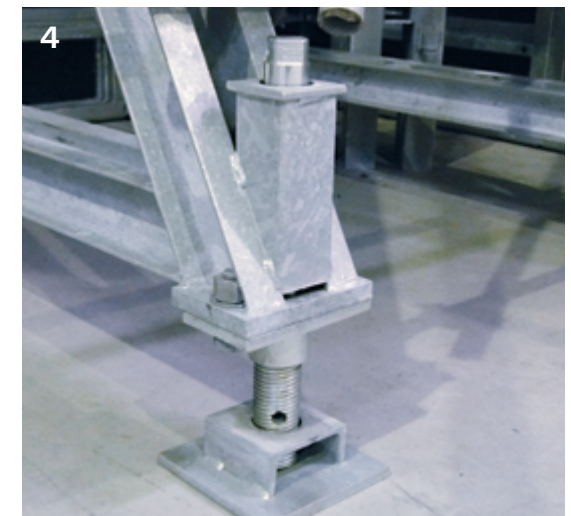
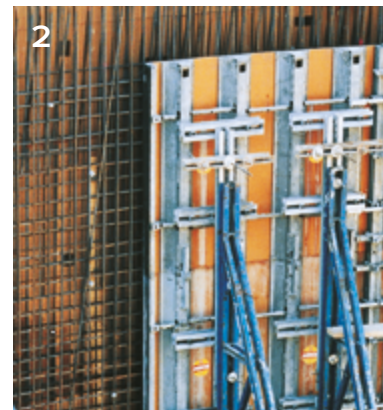
Support frames can also be used in a special application to stabilise MODEX scaffolding against horizontal forces.

more safety
more productivity

Support Frames

Work safely & productively

- › High strength: Support frames can withstand a maximum concrete pressure of up to 60 kN/m² (1)
- › Suitable for walls up to a maximum pouring height of 8.60 m.
- › Fully compatible with Hünnebeck frame wall formwork, circular wall formwork, and timber beam wall formwork. (2)
- › The distances between the support trestles can be adjusted depending on the construction plan. (3)
- › Base jacks ensure precise adjustment for single-sided structures. (4)
- › Simple crane handling with integrated SF shifting hooks for easy transport as well as an easy handling of formwork units
- › The SF extension bar allows for support frame use behind a 5.40 m tall MANTO formwork.



more safety
more productivity

Support Frames

Engineering-Services

Phase 1

We analyse the situation.



Phase 2

We develop the technical drawings and supply the required quantity list.



We can design the most complex projects on your behalf quickly and thoroughly. Starting with the ground plan and facade dimensions, we produce the required structural drawings, determine the precise quantities of materials and supply all the required quantity lists.

We help in finding the right safety and access solution. Transparency, flexibility, cost-effectiveness and safety are a matter of course for us and an integral part of our corporate philosophy.

Phase 3

We plan and implement the realisation.



Phase 4

We assist with project finalisation.



Whatever it takes! We assist you throughout complex construction projects including the engineering of one-off structures. Our mission at all times is to protect you from any unnecessary risks and help you arrive at the best-possible results in every respect.

Application & use

› Single-faced walls

Support frames integrate with

- › PLATINUM
- › MANTO®
- › RASTO®
- › GF 20 + 24
- › RONDA®

more safety
more productivity

> best in class safety performance

> specialty team of ~40,000 People

> 30,000+ customers ... and growing

> ~340 locations in 25 Countries

> revenues of nearly ~\$5b

> assets & equipment worth ~\$4.2b

Why BrandSafway?

Unique combination of expertise & resources

We are part of **BrandSafway**, a leading global provider of access, specialised services and forming & shoring solutions to the industrial, commercial and infrastructure end markets. With more than 340 branches all over the world, we provide support for ongoing maintenance as well as for refurbishment needs and new construction plans.

As one strong team, we support our customers:

- > **Brand Energy & Infrastructure Services** is one of the world's largest industrial services specialists;
- > **Brand Access Solutions** is the UK's largest full-service provider of scaffolding and access systems;
- > **Hünnebeck** stands for safe and highly efficient formwork, scaffolding and safety technology.

[More about BrandSafway](#)



Contact

Europe Hünnebeck Austria GmbH
 Royerstraße 2
 2482 Münchendorf
 +43 2259 93080
www.huennebeck.com/at

Hünnebeck Deutschland GmbH
 Rehhecke 80
 40885 Ratingen
 +49 2102 9371
www.huennebeck.com/de

Hünnebeck v Česká republika
 Karolinská 661/4
 186 00 Praha 8
 +420 737 715 140
www.huennebeck.com/cz

Hünnebeck in Luxembourg
 53, Rue Romain Fandel
 4149 Schiffange
 +352 265759
www.brandfrance.fr

Hünnebeck in France
 Allée de Fétan 256
 BP 130 01601 Trévoux
 +33 4740 89050
www.huennebeck.com/fr

Hünnebeck Italia S.p.A.
 Via Isonzo, 9
 22078 Turate (Como)
 +39 2 969731
www.huennebeck.com/it

Hünnebeck Netherlands
 Vlietskade 1019
 4241 WE Arkel, ZH
 +31 183 569 696
www.huennebeck.com/nl

Hünnebeck Polska Sp. z o.o.
 Łubna 55
 05-532 Baniocha
 +48 22 2312300
www.huennebeck.com/pl

Hünnebeck România SRL
 Strada Principala nr. 310
 407145 Capusu Mare, jud.Cluj
 +40 755 045568
www.huennebeck.com/ro

Hünnebeck in the UK
 Rush Lane, Dosthill
 Tamworth, West Midlands, B77 1LT
 +44 1827 289955
www.huennebeck.com

Contact for Hünnebeck products in North America **BrandSafway**
 Global Corporate Headquarters
 600 Galleria Parkway SE, Suite 1100
 Atlanta, GA 30339, USA
 +1 800 558-4772
www.brandsafway.com

Latin and South America Hünnebeck Chile
 Volcán Lascar Poniente 792,
 Parque Industrial Lo Boza, Pudahuel
 Santiago, 9030922
 +56 2 2585 4450
www.huennebeck.com/es

Contact for Hünnebeck products in the Middle East, India and Asia **BrandSafway**
 Flat No. 107, H-AI Manama building,
 Industrial Area
 Dubai Sharjah 37656
 United Arab Emirates
 +971 48132000
www.brandsafway.com

Export Rehhecke 80
 40885 Ratingen
 +49 157 80521302
www.brandsafwaydirect.com

All the trademarks named in this brochure are the property of Brand Industrial Services, Inc., known as BrandSafway, unless marked as third-party rights or identifiable as such in another way. Aluma Systems, Brand, Brand Access Solutions, Hünnebeck, Mastclimbers, and SGB are trademarks of BrandSafway. Furthermore, all rights are reserved, particularly with regard to patent grant or utility model registration. The unauthorized use of these materials, of the trademarks contained therein and other intellectual property rights is expressly prohibited and represents an infringement of copyright, trademark rights and other industrial property rights.

The illustrations in this brochure depict actual site conditions which may not always conform with applicable safety rules and regulations.

**more safety
 more productivity**

HÜNNEBECK 
FORMWORK SOLUTIONS
 BY BRAND SAFWAY