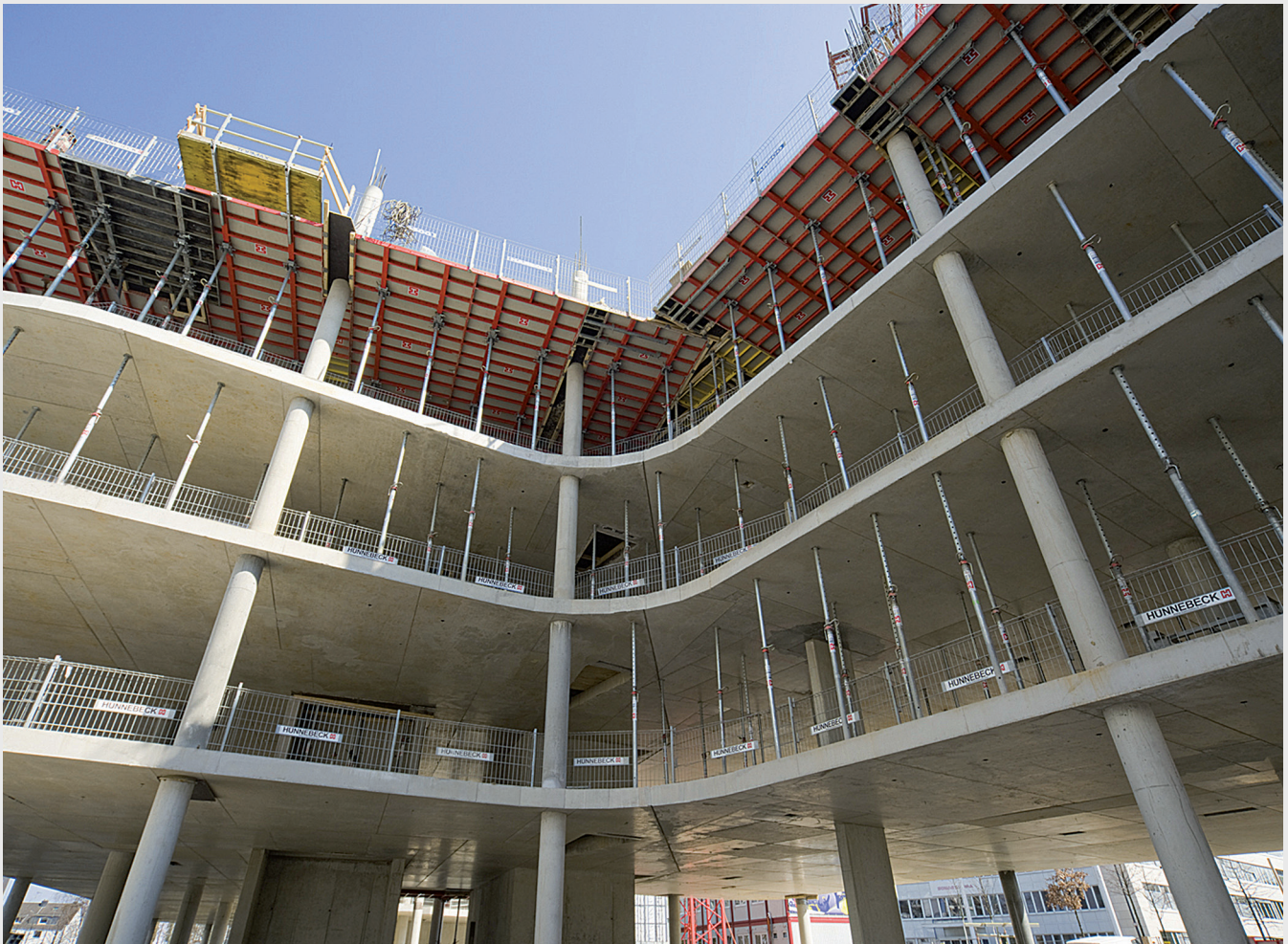


# TOPMAX<sup>®</sup>

The TOPMAX<sup>®</sup> floor table is the quick formwork solution for large slab surfaces with regular ground plans and repetitive geometries.





At Work  
For You™

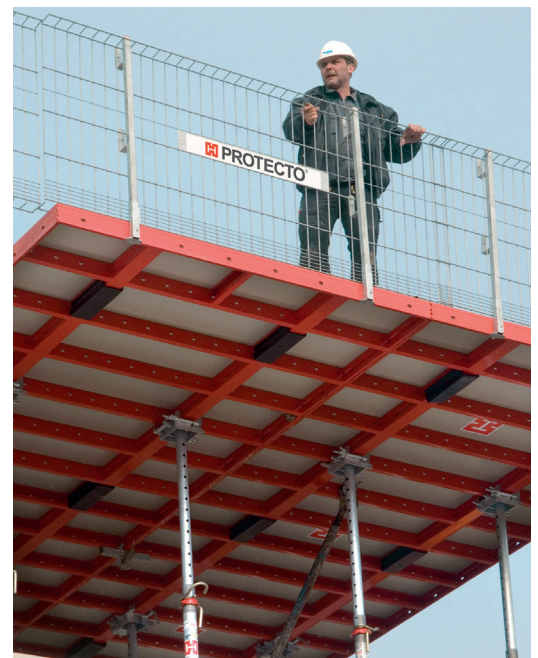


### Der Kö-Bogen

Von und mit:  
Daniel Libeskind, Architektur  
die developer, Projektentwicklung  
Zechbau, Generalübernehmer  
Jones Lang LaSalle, Vermietung

# The Future of Deck Systems

TOPMAX® has been especially developed for the efficient shuttering of large soffit surfaces with regular ground plans and repetitive geometries. Thanks to its small number of components, preassembly is straightforward, and the system is quickly ready for action.



# TOPMAX®



The world's first floor table with a maintenance-free, narrow steel frame combined with plastic form lining. Ideal for the cost-effective realization of larger slab formwork projects with regular ground plans.

## Product Benefits

### TOPMAX®

Large forming units up to 26 m<sup>2</sup> transferable in just a single crane pick

Easy forming of infill and adjustment areas with timber holder or standard RASTO panels

Low transport volumes and stockyard costs due to low table thickness of just 12 cm

High safety measures due to compatibility with PROTECTO edge guard system

Minimum cleaning and repairs due to the powder coating and all around edge guard of the form lining

# TOPMAX<sup>®</sup>

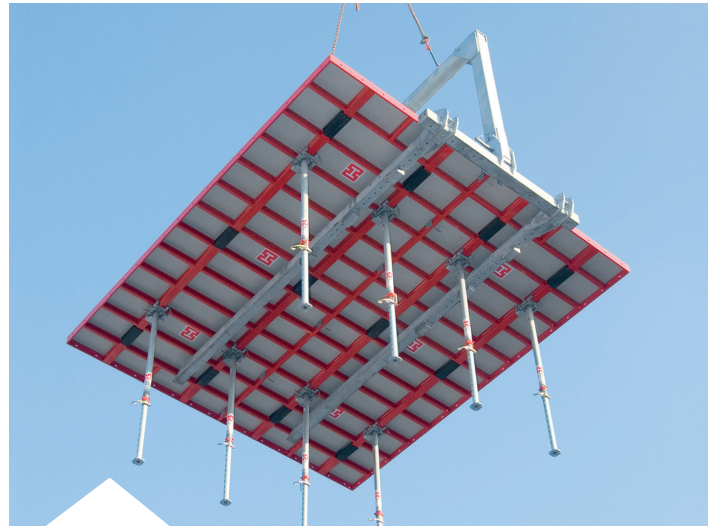
## Key Features

### TOPMAX<sup>®</sup>

TOPMAX table forms have an extremely strong, maintenance-free, hot-dip galvanised and powder-coated steel frame, covered with a high-grade plastic form lining (ECOPLY<sup>®</sup> Q).



High safety measures due to compatibility with PROTECTO edge guard system



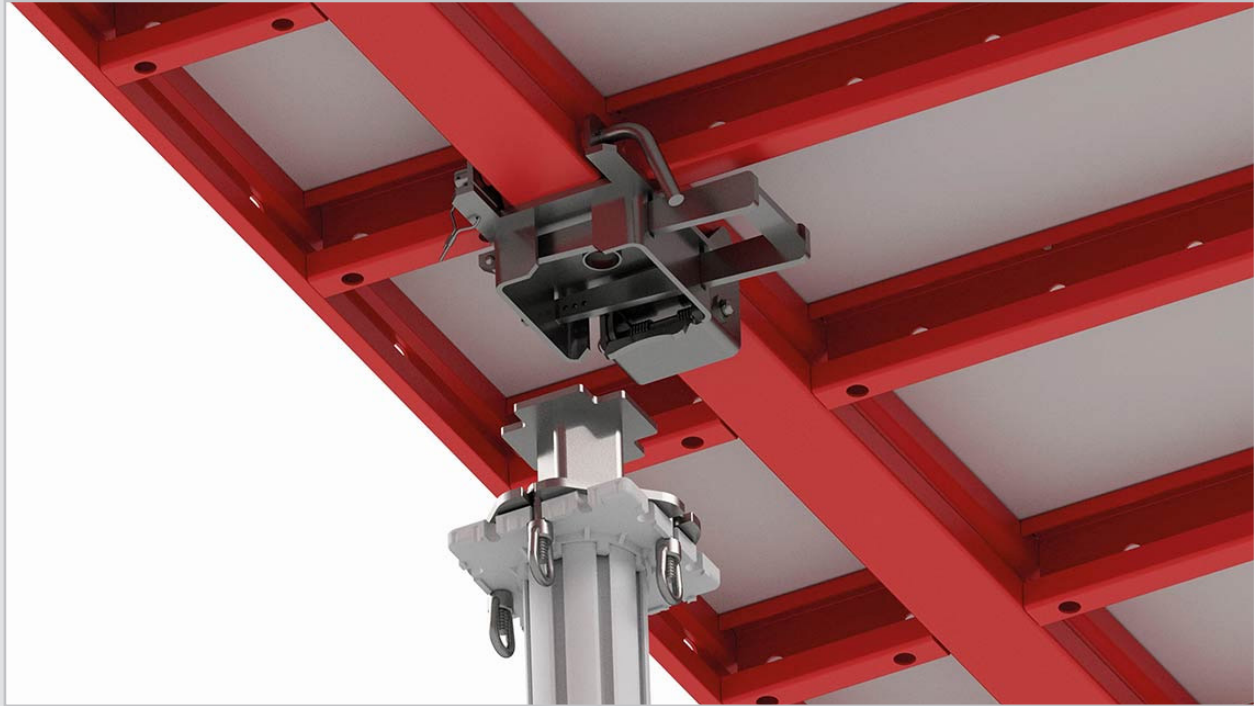
Large forming units up to 26 m<sup>2</sup> transferable in just a single crane pick



Low transport volumes and stockyard costs due to low table thickness of just 12 cm



Specially developed folding heads with self-securing pins make it effortless to



**The multifunctional connection points on the steel frame permit:**

- Easy joining of two table forms by means of the centering tension bolt
- Combination with the RASTO® and TAKKO® system for the rapid creation of infills and adjustment pieces
- Combination with the PROTECTO® edge protection system for improved safety on site

During shuttering and stripping, horizontal displacement is aided by the electric or manual carriage. With the TOPMAX transfer fork, 26 m<sup>2</sup> of table form can be moved in a single crane lift. The TOPMAX Lift can be used as an alternative to transfer the formwork panels to the next pour on the same level.

For slab thicknesses up to half a metre deep, and up to heights of 7.5 m with an extension frame (5.5 m without) the TOPMAX system is ideal for large scale slab formwork projects.

The large area steel frame tables are available in the following sizes to ensure minimal erection and stripping is required before and after the concrete has been poured:

- 13 m<sup>2</sup> table form surface (2.4 m x 5.4 m)
- 10 m<sup>2</sup> table form surface (1.8 m x 5.4 m)

From storage, delivery and erection through to shuttering and stripping, movement on site and return delivery, the TOPMAX system has been designed for time and cost-cutting practical use.

# TOPMAX<sup>®</sup>

## Technical Data

Product Description	Steel-Frame Table With Plastic Form Lining
Element Widths	180   240 cm (70   94.5 in)
Element Lengths	540 cm (17.7 ft)
Forming Areas	12.96 m <sup>2</sup> (240 x 540 cm)   9.72 m <sup>2</sup> (180 x 540 cm) 139.5 ft <sup>2</sup> (94.5 x 212.6 in)   104.6ft <sup>2</sup> (70 x 212.6 in)
Table Height	12 cm steel frame profile (4.72 in)
Form Lining Type	15 mm ECOPLY Q plastic composite form lining
Table Weight	516 kg (240 x 540 cm)   445 kg (180 x 540 cm) 0.56 ton (94.5 x 212.6 in)   0.49 ton (70 x 212.6 in)
Corrosion Protection	Hot-dip galvanization and powder-coating
Standard Shoring	EUROPLUS new slab props 20 kN   30 kN
Special Shoring	MODEX shoring   Aluminum prop
Bearings	TOPMAX folding head   Connection bearing
Adjustments	Support girder with RASTO panel Timber holder & fillers

## ► Application & Use

- High rise, multi floor, typical flooring
- Parking garage, large slab applications
- Commercial Applications
- Industrial Applications
- Infrastructure Applications

## ► Potential savings compared to H20 table forms

- Up to 25% lower wage costs
- Up to 50% lower crane costs
- Up to 70% lower transport and logistics costs