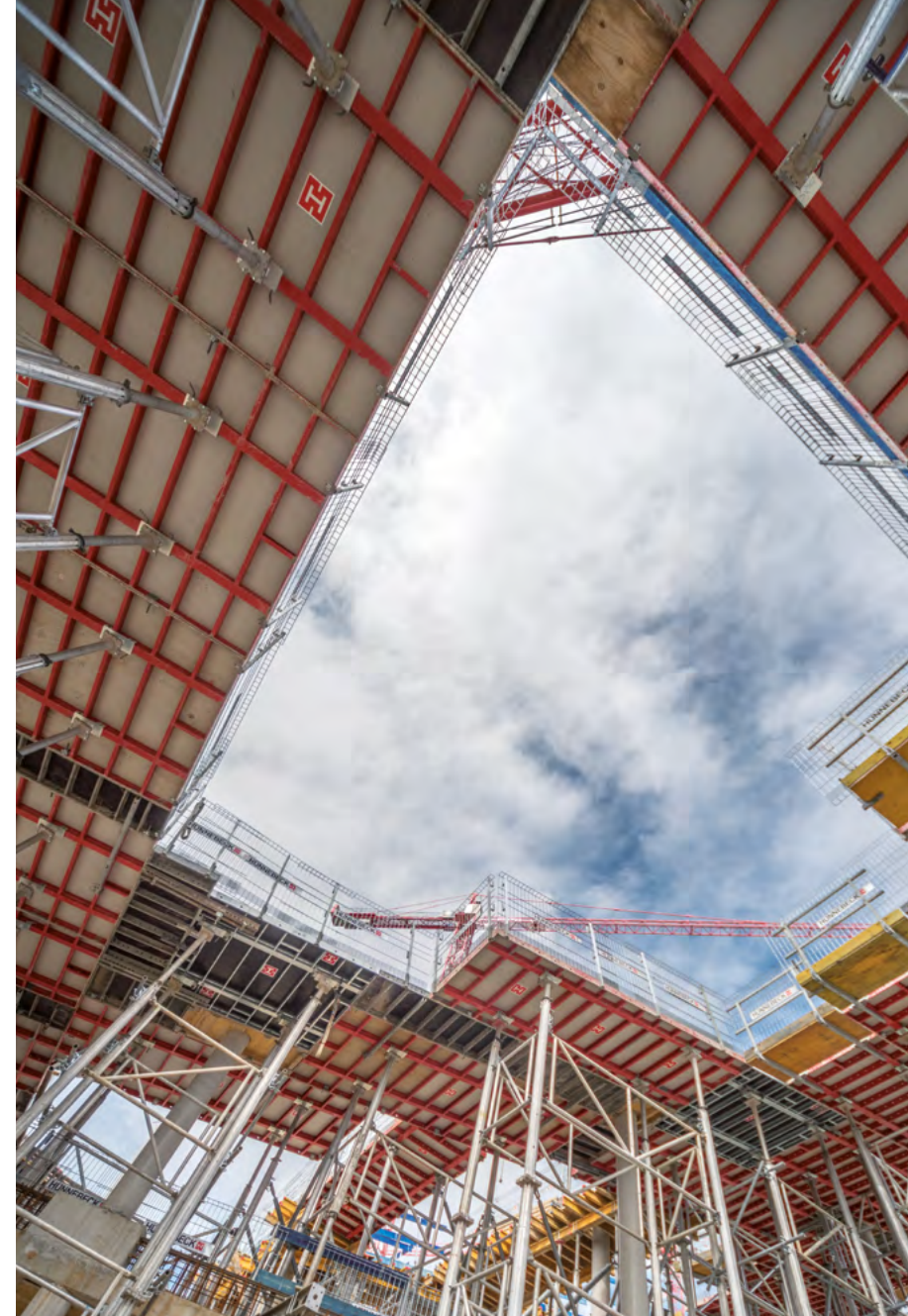


# TOPMAX<sup>®</sup>

The TOPMAX floor table is the quick formwork solution for large slab surfaces with regular ground plans and repetitive geometries.

- ▶ Technical data
- ▶ Product advantages – Work productively
- ▶ Product advantages – Work safely
- ▶ System overview
- ▶ Logistics
- ▶ Engineering-Services

At Work For You



**HÜNNEBECK** 

BY BRAND SAFWAY

# TOPMAX<sup>®</sup>

## Technical data

User-friendly, efficient and very safe: TOPMAX slab formwork. Use these floor tables to form large surfaces with a slab thickness of up to 50 cm without structural calculation; up to 150 cm thickness with structural calculation.

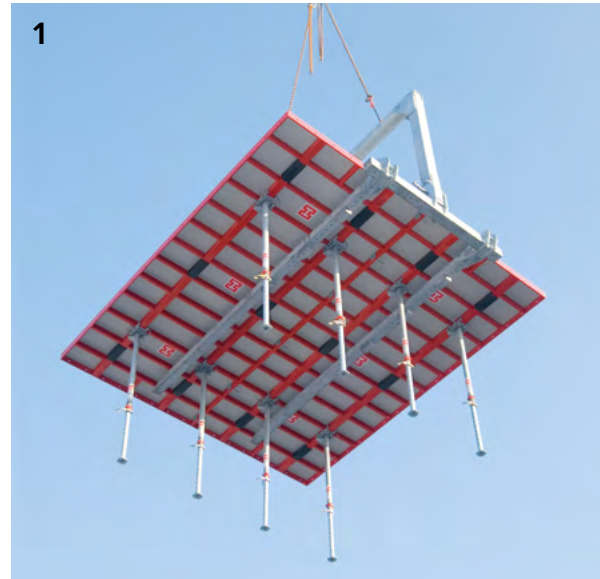


Product description	Steel-frame floor table with plastic form lining
Element widths	180   240 cm
Element lengths	540 cm
Forming areas	9.72 m <sup>2</sup> (180 x 540 cm)   12.96 m <sup>2</sup> (240 x 540 cm)
Table height	12 cm steel frame profile
Form lining type	15 mm ECOPLY <sup>®</sup> full plastic composite sheet
Weight	422 kg (180 x 540 cm)   495 kg (240 x 540 cm)
Corrosion protection	Hot-dip galvanisation and powder-coating
Standard shoring	EUROPLUS <sup>new</sup> ® props 20 kN   30 kN   GASS <sup>®</sup>
Special shoring	MODEX <sup>®</sup> shoring   GASS <sup>®</sup>
Bearings	TOPMAX <sup>®</sup> folding head   Connection bearing
Adjustments	Support girder with RASTO <sup>®</sup> panel   Timber holder & fillers
Forming/stripping times	$t = 0.15 - 0.30 \text{ h/m}^2$ *
Special features	<ul style="list-style-type: none"> <li>• Table jack lift for fast horizontal transportation</li> <li>• Integrated safety with PROTECTO<sup>®</sup> and EXTRAGUARD<sup>®</sup> edge guard systems</li> <li>• Very robust for a long service life</li> </ul>

# TOPMAX<sup>®</sup>

## Work productively

- ▶ 70% less transport volume and storage space required due to tables that are only 12 cm thick
- ▶ Less crane time due to ability to move 26 m<sup>2</sup> tables at once (1)
- ▶ Folding head allows tables to be moved with props attached (1)
- ▶ Compatibility with RASTO and TOPEC enables flexible and quick creation of infills (2)
- ▶ Compatibility with GASS facilitates efficient creation of greater slab heights (3)

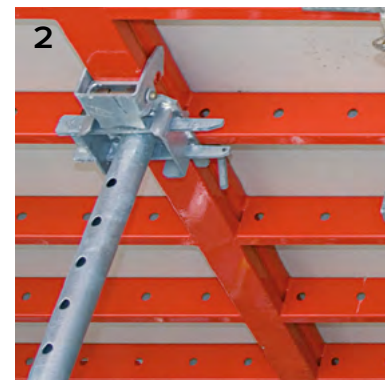




# TOPMAX<sup>®</sup>

## Work safely

- ▶ Tables with pre-assembled PROTECTO edge protection are easy to move (1)
- ▶ Very safe fall protection around the slab edge
- ▶ Hot-dip galvanised steel frame ensures long serviceable life (2)



# TOPMAX<sup>®</sup>

## System overview

5

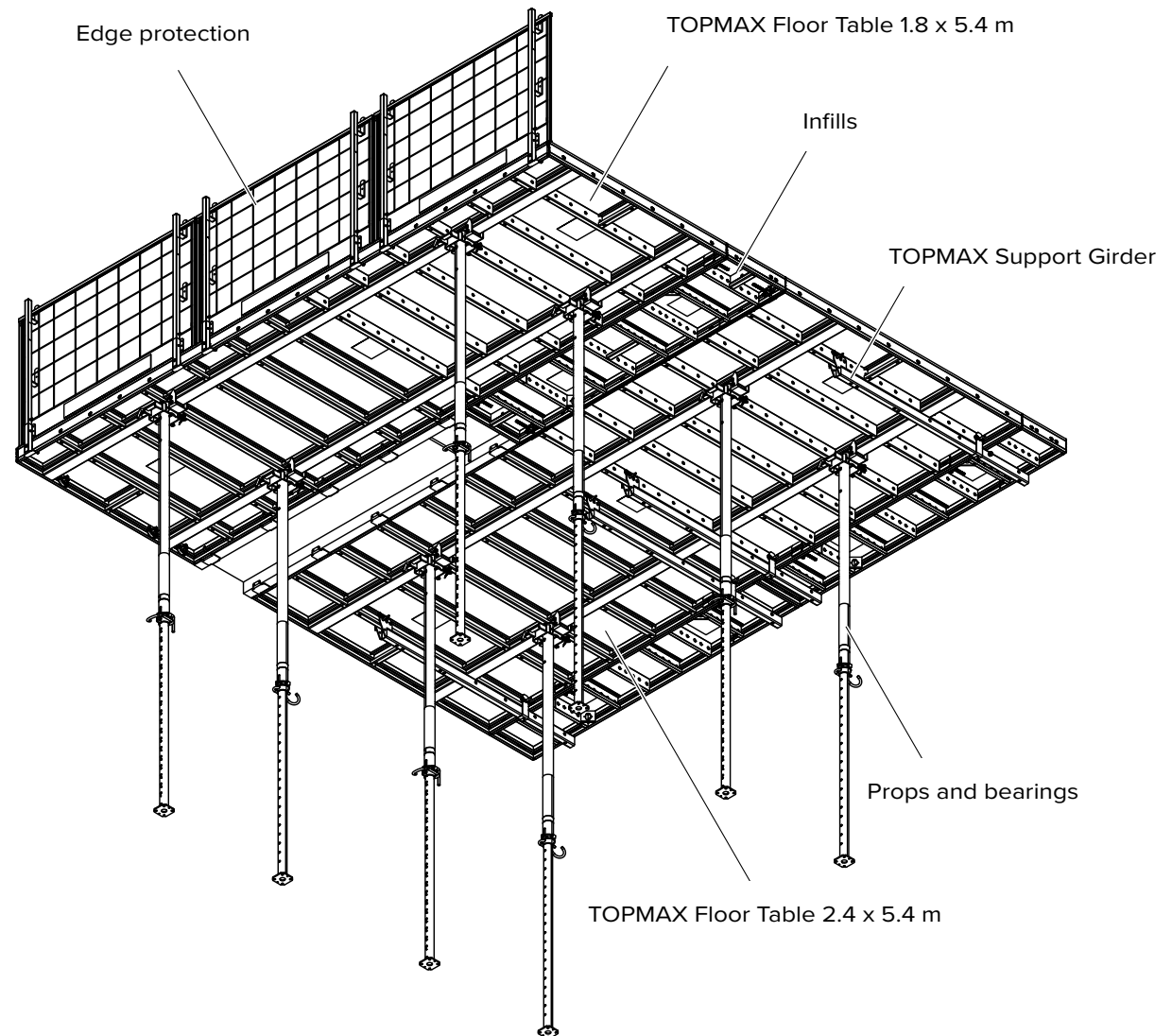
On the following pages you will find excerpts from our user manuals. The complete instructions are available at [www.huennebeck.com](http://www.huennebeck.com).

### Product features

The TOPMAX floor table system consists of a robust and hot-dip galvanized steel frame with a concrete-repelling powder coating. The high-performance full plastic form sheet is protected by the steel frame of the panel providing an even concrete face of the highest quality and reducing the refinishing work to a minimum.

The optimized combination of steel and plastic turns TOPMAX into a long-lasting and high-quality floor table system. The TOPMAX floor tables are supported by the standard props of Hünnebeck.

TOPMAX floor tables are available in the dimensions 2.40 x 5.40 m and 1.80 x 5.40 m achieving formed areas of 12.96 m<sup>2</sup> and 9.72 m<sup>2</sup>. Two floor tables with an area of up to 25.92 m<sup>2</sup> can be lifted by crane in just one pick.



# TOPMAX<sup>®</sup>

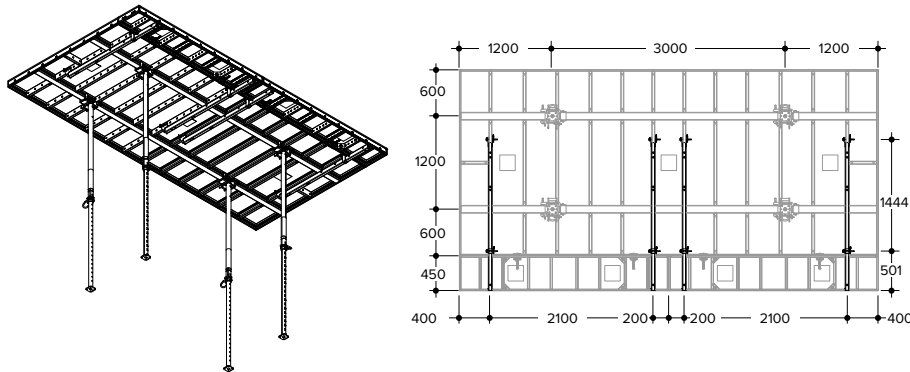
## System overview

6

### Possible configurations

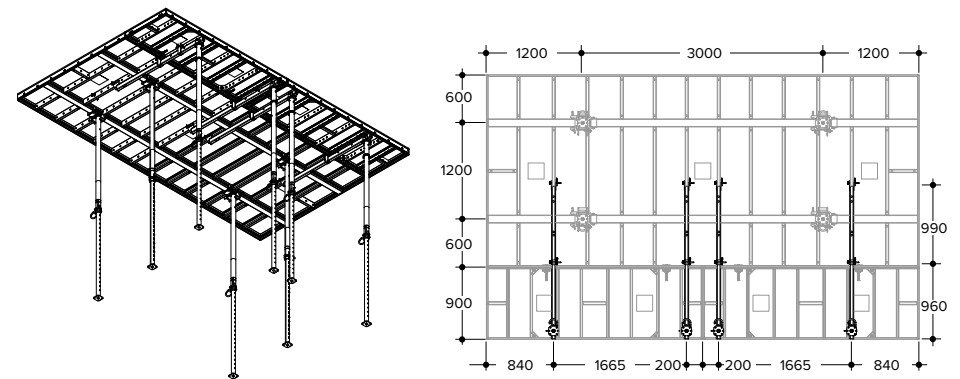
The following typical configurations are applicable only when using a TOPMAX Floor Table 2.4 x 5.4 m (code:602586). If a TOPMAX Floor Table 1.8 x 5.4 m (code:602585) is to be used, a separate analysis is required.

#### Case 1 – Cantilevered 0.45 m panels, no support.



Slab thickness	Concrete load	Support load TOPMAX prop	Deflection
[mm]	[kN/m <sup>2</sup> ]	[kN]	[DIN 18202]
100	4.40	23.10	Line 7
150	5.60	29.70	Line 7
200	6.90	36.30	Line 6
250	8.10	42.90	Line 5
300	9.40	49.60	Line 5
350	10.80	57.30	Line 5

#### Case 2 – Cantilevered 0.90 m panels, end support.



Slab thickness	Concrete load	Support load		Deflection
		TOPMAX prop	RASTO/TAKKO prop	
[mm]	[kN/m <sup>2</sup> ]	[kN]	[kN]	[DIN 18202]
100	4.40	19.50	4.20	Line 7
150	5.60	25.00	5.50	Line 7
200	6.90	30.50	6.70	Line 7
250	8.10	36.10	7.90	Line 7
300	9.40	41.70	9.20	Line 6
350	10.80	48.10	10.60	Line 6

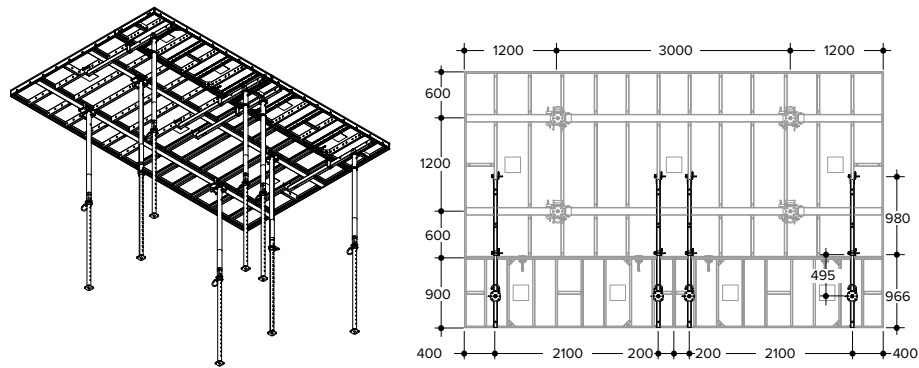
# TOPMAX<sup>®</sup>

## System overview

7

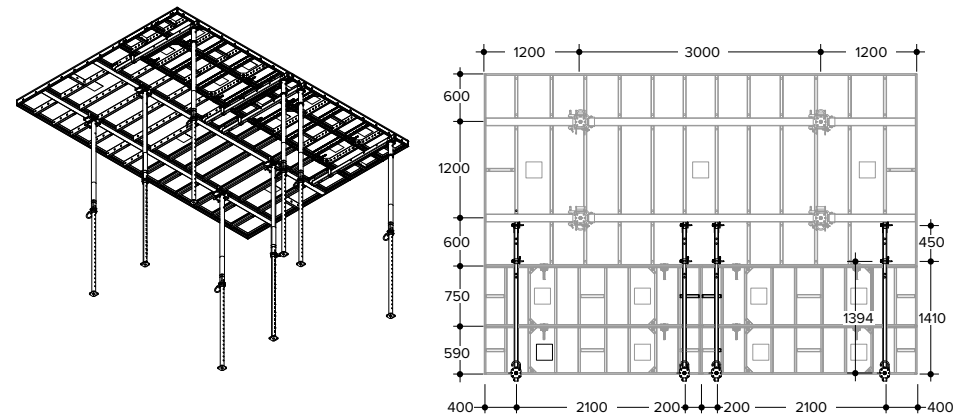
### Possible configurations

Case 3 - Cantilevered 0.90 m panels, middle support.



Slab thickness [mm]	Concrete load [kN/m <sup>2</sup> ]	Support load		Deflection [DIN 18202]
		TOPMAX prop [kN]	RASTO/TAKKO prop [kN]	
100	4.40	14.80	5.90	Line 7
150	5.60	19.10	7.60	Line 6
200	6.90	23.30	9.20	Line 5
250	8.10	27.60	10.90	Line 5

Case 4 – Cantilevered 1.35 m panels, end support.



Slab thickness [mm]	Concrete load [kN/m <sup>2</sup> ]	Support load		Deflection [DIN 18202]
		TOPMAX prop [kN]	RASTO/TAKKO prop [kN]	
100	4.40	30.62	4.50	Line 6
150	5.60	38.90	5.70	Line 5

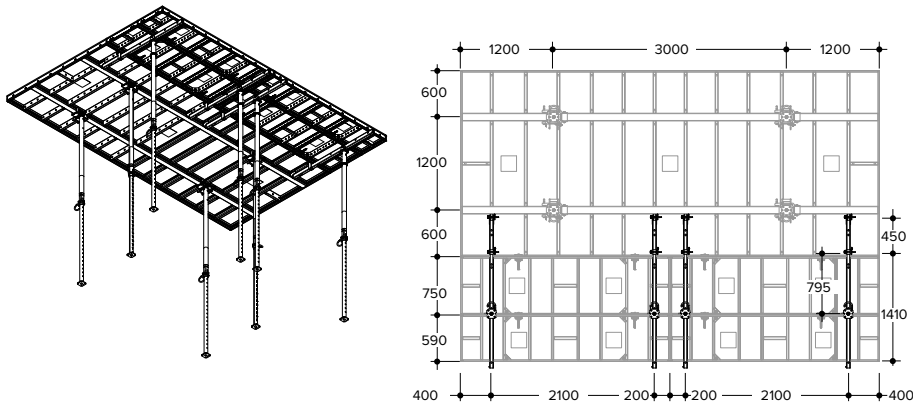
# TOPMAX<sup>®</sup>

## System overview

8

### Possible configurations

Case 5 – Cantilevered 1.35 m panels, middle support.



Slab thickness	Concrete load	Support load		Deflection
		TOPMAX prop	RASTO/TAKKO prop	
[mm]	[kN/m <sup>2</sup> ]	[kN]	[kN]	[DIN 18202]
100	4.40	19.00	8.30	Line 7
150	5.60	24.40	10.70	Line 7
200	6.90	30.00	13.10	Line 7

### Application & use

- › Large slab surfaces with regular ground plans

**TOPMAX<sup>®</sup>** integrates with

- › RASTO<sup>®</sup>
- › TOPEC<sup>®</sup>
- › EUROPLUS<sup>®</sup> *new*
- › PROTECTO<sup>®</sup>
- › GASS<sup>®</sup>

If you would like to find out more, take a look at our **Video.**



# TOPMAX<sup>®</sup>

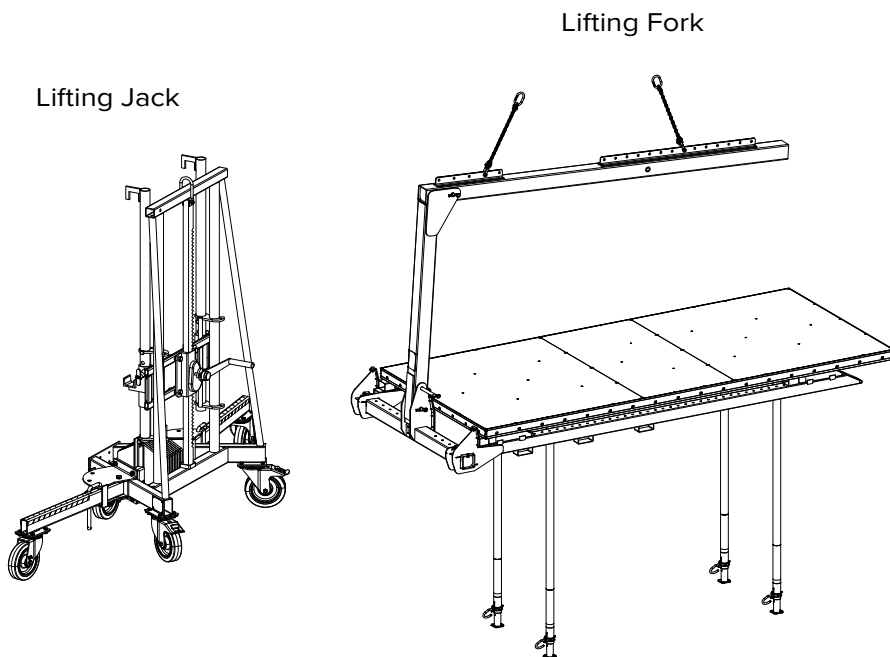
## Logistics

9

### Transporting TOPMAX Floor Tables by crane

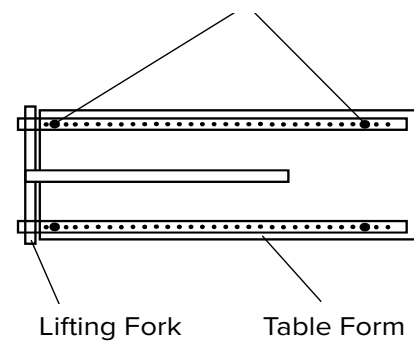
#### TOPMAX Lifting Fork

Transporting TOPMAX Floor Tables by crane using the TOPMAX Lifting Fork (code:603074) is easy, safe and very efficient. In this way, the TOPMAX Floor Tables are optimally transported horizontally and vertically on site. When stripping the formwork the transport out of the building is also easy to handle.

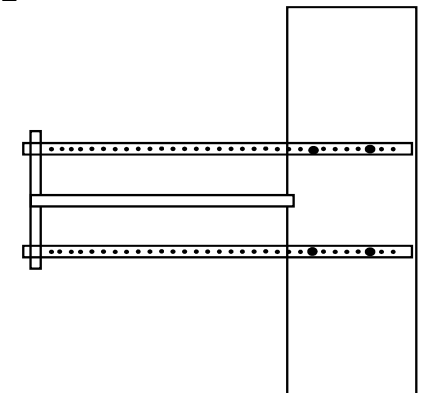


The TOPMAX Floor Table can be lifted from the short side as well as from the long side.

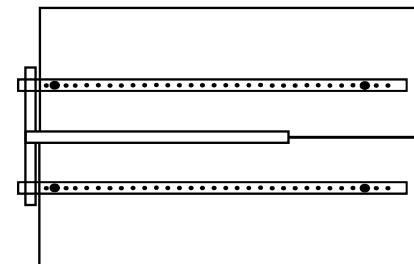
#### 1 Position of long bolt in Spacer Plug



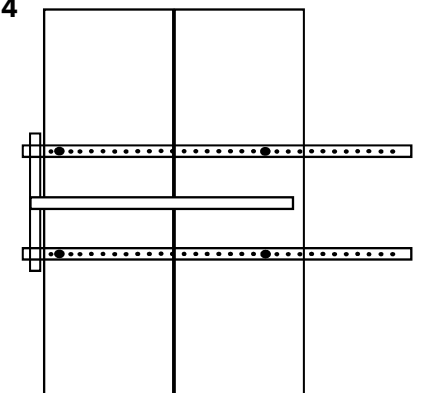
#### 2



#### 3



#### 4



# TOPMAX<sup>®</sup>

## Engineering-Services

**Phase 1**  
**We analyse the situation.**

**Phase 2**  
**We develop the technical drawings and calculate the costs.**

We can design the most complex projects on your behalf quickly and thoroughly. Starting with the ground plan and facade dimensions, we produce the required structural drawings, determine the precise quantities of materials and supply all the required quantity lists.

We help in finding the right safety and access solution. Transparency, flexibility, cost-effectiveness and safety are a matter of course for us and an integral part of our corporate philosophy.

Whatever it takes! We assist you throughout complex construction projects including the engineering of one-off structures. Our mission at all times is to protect you from any unnecessary risks and help you arrive at the best-possible results in every respect.

**Phase 3**  
**We plan and implement the realisation.**

**Phase 4**  
**We assist with project finalisation.**